



YOUR COMFORT ZONE.

GiMax Eco

GiMax PREMIUM

GiMax FaMily is the new range of KLEINE KESSEL brand products which includes a series of “combined” wall-hung condensing boilers for heating and the production of domestic hot water with powers of 25, 30 and 35 kW, entirely MADE IN ITALY.

The **GiMax ECO** and **GiMax PREMIUM** condensing boilers can be adapted to multiple installations in the home environment and are able to meet different needs by adapting to any type of system. Compact dimensions and excellent performance thanks to the careful selection and manufacture of high-tech components used.

The spiral condensation heat exchanger ensures very high yields and great reliability as well as ease of access in maintenance operations. Ease of use is guaranteed by the digital control panel to communicate with the user in an easy and comfortable way.

The GiMax Family has been designed to meet the growing demands of high comfort but always paying the utmost attention to savings and respect for the environment around us.



GiMax
PREMIUM



GiMax
ECO

THE RANGE

GiMax ECO and PREMIUM condensing boilers are available in 25, 30 and 35 kW powers and in combined versions for heating and production of domestic hot water, heating only, for built-in installation, for outdoor installation.

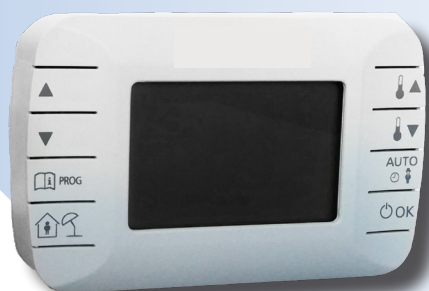
PRODUCT PLUSES

The WiFi thermostat is a remote control system via WiFi for GiMax ECO and PREMIUM boilers. Even if one is away from home, with the WiFi thermostat one can fully manage one's heating system via smartphone and tablet with a simple and intuitive interface.

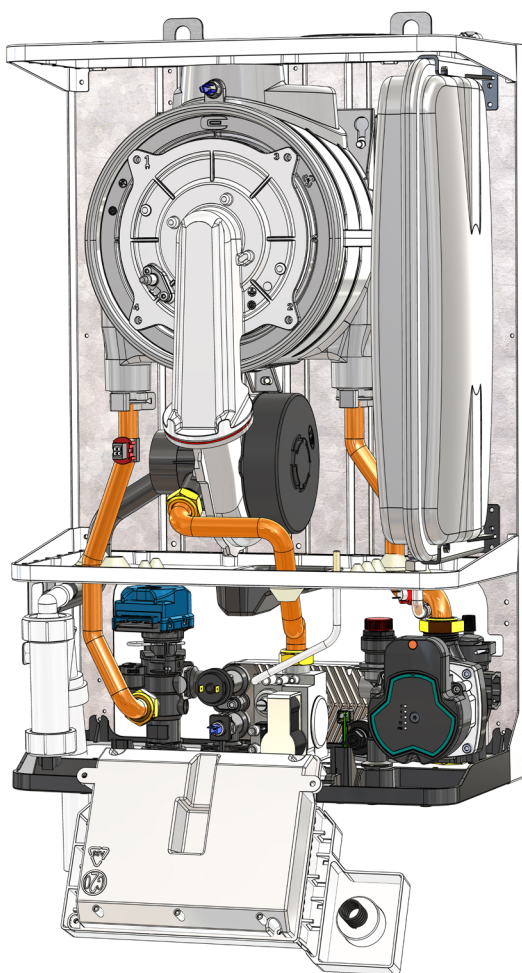
With the WiFi thermostat one can:

- View all the various boiler temperatures and the boiler operating status in real time;
- View and adjust the room temperature;
- Manage the switching on and off of the boiler both manually and by a program with various time slots;
- Receive a notification in the event of a boiler block;
- View any boiler errors and, where possible, reset them remotely;
- View the history of the last 5 errors.

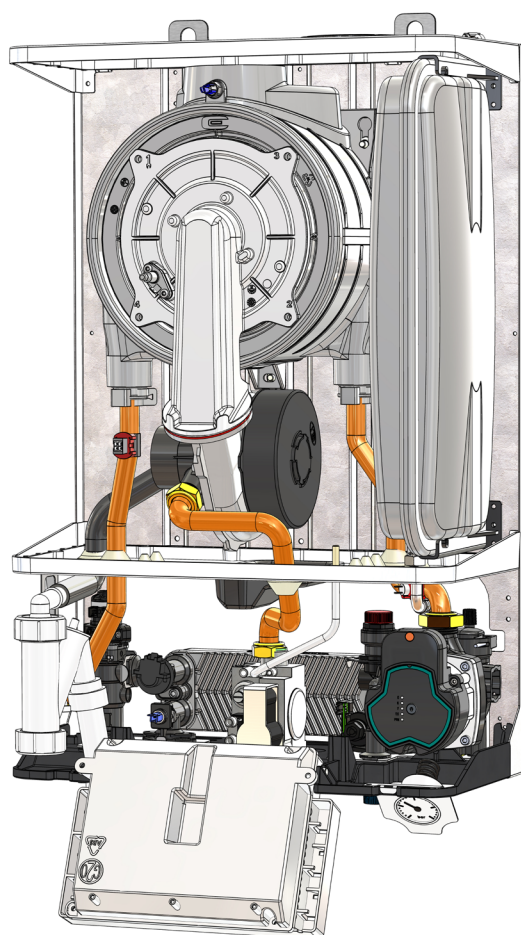
Available in wall-hung or table version



GiMax ECO and PREMIUM boilers are designed for the use of a remote control with which it is possible to control all functions and which can be used as a weekly programmable thermostat.



GiMax
ECO



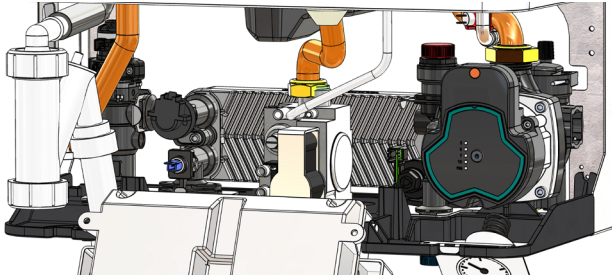
GiMax
PREMIUM



Electronic control panel,
elegant and efficient for **GiMax PREMIUM**.

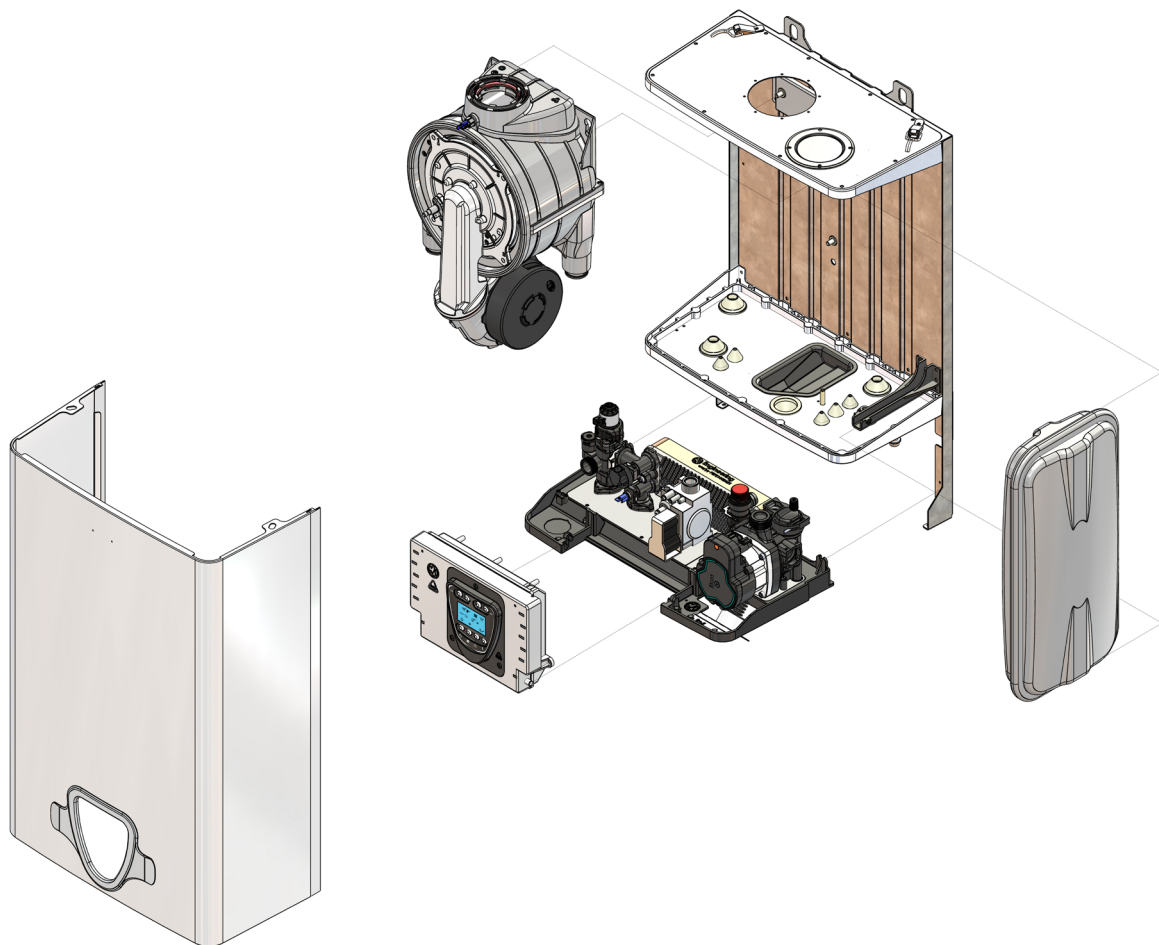
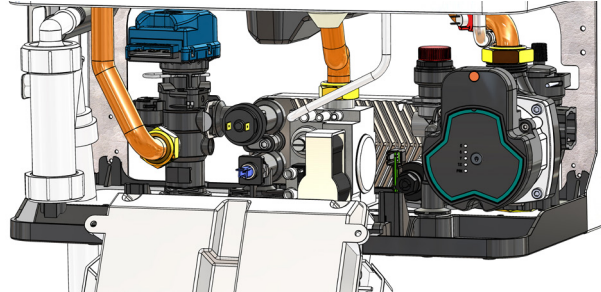
Smart and dynamic control panel for **GiMax ECO**.





GiMax PREMIUM is supplied with exchanger with wheelbase 214, stepper motor 3 way valve and transducer.

GiMax ECO is supplied with exchanger with wheelbase 154, 230V motor and pressure switch.



BLOCK ASSEMBLY CONCEPT

MR - MN TECHNICAL DATA

*MR= C.H. + D.H.W

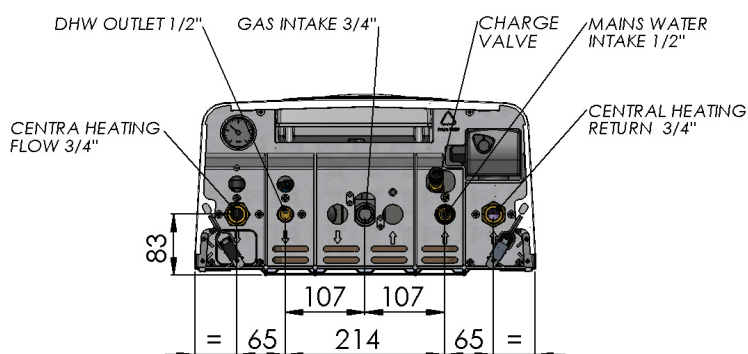
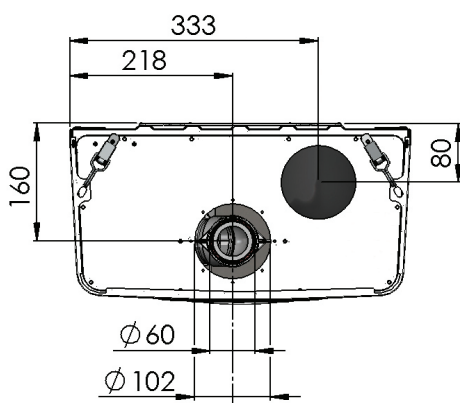
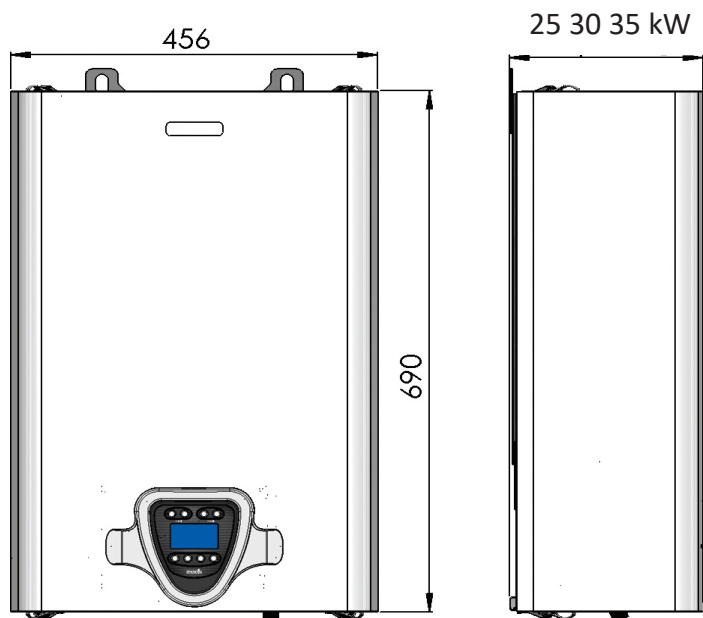
*MN= C.H. ONLY

		GiMax 25		GiMax 30		GiMax 35	
		MR	MN	MR	MN	MR	MN
Category		II2H3P		II2H3P		II2H3P	
Type		B23 C13 C33 C43 C53 C83		B23 C13 C33 C43 C53 C83		B23 C13 C33 C43 C53 C83	
Nominal Load	kW	20,9		25,71		30,12	
Minimum nominal Load	kW	4,01		5,40		6,05	
Maximum Load (80°/60°)	kW	20,44	20,44	25,16	25,16	34,61	34,61
Minimum Load (80°/60°)	kW	3,86	3,86	5,23	5,23	6,05	6,05
Maximum load in condensing (50°/30°)	kW	22,5		27,40		30,21	
Minimum load in condensing (50°/30°)	kW	6,6		8,3		9,2	
Max Efficiency (80°/60°)	%	97,80		97,90		95,95	
Min Efficiency (80°/60°)	%	96,20	96,20	96,90	96,90	96,4	
Max efficiency in condensing (50°/30°)	%	107,00		107,00		104	
Efficiency at partial nominal load (50°/30°)	%	107,80		107,50		106,4	
Max exhaust temperature	°C	55,40		52,20		51,3	
Mass flow rate	g/s	9,70		11,90		14,35	
Min. Mass flow rate	g/s	1,88		2,55		2,90	
Heat loss from chimney when burner off	%	0,15		0,15		0,15	
Heat loss from chimney when burner on (max power)	%	0,88		0,97		0,96	
Heat loss from chimney when burner on (min power)	%	0,92		0,70		0,70	
Heat loss from boiler surface area (Max. Power)	%	1,37		1,18		1,18	
Heat loss from boiler surface area (Min. Power)	%	2,90		2,40		2,50	
Nox class		6		6		6	
Max available pressure (exhaust+suction 0,5 Ø 80 mm separate pipes)	Pa	200		250		182	
DHW nominal load	kW	25,07	/	30,04	/	34,3	/
Min. DHW nominal load	kW	4,01	/	5,40	/	6	/
CH min/max operating pressure	bar	0,8/3		0,8/3		0,8/3	
Power supply	Volt -Hz	230/50		230/50		230/50	
Maximum absorbed electric power	W	170		170		170	
IP rating	IP	X4D		X4D		X4D	
Expansion vessel		8		8		8	
Expansion vessel pre-charge	bar	1		1		1	
Max. DHW pressure	bar	6	/	6	/	6	/
Min. DHW pressure	bar	0,50	/	0,50	/	0,50	/
DHW flow rate at Δt 35°C	l/min	9,95	/	12	/	15,9	/
DHW min. flow rate	l/min	1,8	/	1,6	/	1,6	/
DHW flow limiter	l/min	12	/	16	/	16	/
		MR	MN	MR	MN	MR	MN

	COMBUSTIBLE	MR	MN	MR	MN	MR	MN
Gas consumption at nominal load	G20 m/h ³	2,12	2,12	2,62	2,62	2,91	2,91
	G31 kg/h	1,53	1,53	1,90	1,90	2,18	2,18
Gas consumption at maximum load	G20 m/h ³	2,55	-	3,10	-	3,33	-
	G31 kg/h	2,10	-	2,30	-	2,5	-
Gas consumption at minimum load	G20 m/h ³	0,41	0,41	0,55	0,55	0,58	0,58
	G31 kg/h	0,29	0,29	0,40	0,40	0,43	0,43

				GiMax 25		GiMax 30		GiMax 35	
				MR	MN	MR	MN	MR	MN
Energy Season Efficiency Class for Room Heating			-	-	A	A	A	A	A
Nominal Load			P _{nominale}	kW	20	25	30	30	30
Energy Season Efficiency for Room Heating			η _S	%	91	91	91	91	91
HEAT LOAD									
At Nominal Load and High Temperature			P ₄	kW	20,44	25,16	30,12	30,12	30,12
At 30% Nominal Load and Low Temperature			P ₁	kW	6,6	8,3	9,2	9,2	9,2
EFFICIENCY									
At Nominal Load and High Temperature			η ₄	%	88,0	88,1	88	88	88
At 30% Nominal Load and Low Temperature			η ₁	%	97,0	96,8	97,1	97,1	97,1
AUXILIARY POWER CONSUMPTION									
Full load			el _{max}	kW	0,054	0,055	0,055	0,055	0,055
Partial load			el _{min}	kW	0,039	0,035	0,036	0,036	0,036
IStandby			PSB	kW	0,003	0,003	0,003	0,003	0,003
OTHER PARAMETERS									
Heat Loss in Stand-by mode			P _{stby}	kW	0,3	0,3	0,3	0,3	0,3
Power Consumption of pilot flame			Q _{HE}	GJ	28,9	48	53	53	53
Inner Sound Power Level			L _{WA}	dB	51	52	52	52	52
Emissions of nitrogen oxides			NO _x	mg/kWh	39	40,5	41,5	41,5	41,5
FOR COMBI BOILERS :									
Declared Load Profile			-	-	XL	-	XL	-	XL
Hot Water Power Efficiency			Q _{elec}	kWh	0,18	-	0,18	-	0,19
Annual Power Consumption			AEC	kWh	28,9	-	29	-	29,3
Annual Gas Consumption			η _{wh}	%	87	-	85	-	85
Daily Power Consumption			Q _{fuel}	kWh	21,7	-	22,2	-	22,2
Daily Gas Consumption			AFC	GJ	16,6	-	16,9	-	17,2

DIMENSIONS



■ Features

- Range Rated
- Fully accessible condensing heat exchanger
Premixed burner with very low NOx emission
- Quick connect components for maximum accessibility
- Composite hydroblock with high performance circulator
- DHW heat exchanger in stainless steel
- Fully configurable management for every need
- Elegant and compact
- Predisposed for $\phi 60/100$ coaxial flue pipes and $\phi 80/80$ split flue pipes.
- Prepared for O.T. remote control and outdoor sensor/room sensor
- 8 liter expansion vessel with butyl membrane

■ Accessories

- CE Approved $\phi 60/100$ coaxial flue kit in polypropylene with L = 750 mm inspection
- $\phi 80/80$ split flue kit in plastic
- Vertical coaxial connection
- NTC 10K outdoor probe kit
- Fittings kit
- Remote control
- $\frac{3}{4}$ " three-way valve kit for remote storage tank including NTC probe
- 1" three-way valve kit for remote storage tank including NTC probe

Operational headquarters: Loc. Campogrande 13, 29013 CARPANETO PIACENTINO(PC), Italy
phone +39 0523 850513 - info@kleinekessel.com - www.produzionecaldaie.com

